

## Description of the campsite and rental conditions for Mobilhome OHARA 784 6 persons



### 1. Administrative information's :

Name and address of the campsite LES ULEZES route de Romans 26260 SAINT DONAT SUR HERBASSE, FRANCE

one number: +33 (0)4 75 47 83 20

Mail address : [contact@domaine-des-ulezes.com](mailto:contact@domaine-des-ulezes.com)

Website : <http://www.french-camping-drome.com>

Data of the opening period : April, 1 – October, 31

Hours of arrival and departure: 14 hours – 12 hours

Category (number of stars) : 4 (AP N° 2011284-0004 from October, 11- 2011)

Tourism classification : 76 pitches

Holiday classification : 9 pitches

SIRET (company registration) number: 489 317 394 00012

GPS coordinates: lat 45.1192 long 4.9927

### 2. General information's

Geographical situation of the campsite :

Distance of the nearest river : 10 metres

Distance of the nearest town or village: 600 metres

Distance of the nearest railway station : 12 km (Romans)

Distance of the nearest bus station : 12 km (Romans)

Distance of the nearest food shop : 600 metres

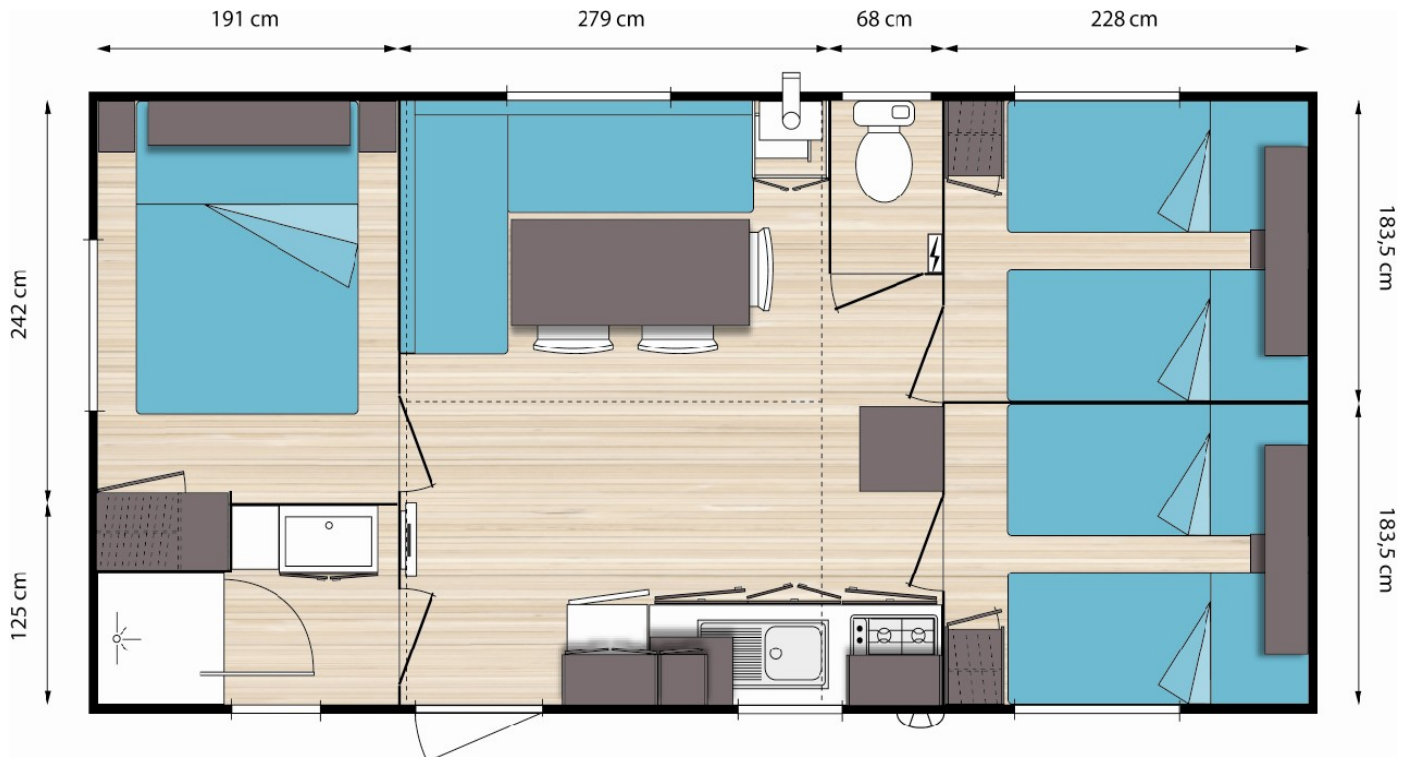
Between Romans and Tain l'Hermitage, the commune of Saint Donat sur l'herbasse, in the Drôme des collines, welcomes you. You'll find here a lot of shops, a medical practice, dental practices, and a very nice old town with its church that you can visit and where you can be present at concerts. Saint Donat is ideally situated between mountains of the Vercors and the mountains of the Ardèche.

Bus services assure the transfers between Saint Donat and Romans or Valence.  
(<http://buscars26.free.fr/horaires.html>)

General, on the campsite located facilities: Washing machine, dryer, ironing room, phone point, swimming pool, playground for children, mini golf, table tennis table, sports terrain, games room and TV room, free library, snack bar, internet point, Wi-Fi

### 3. Descriptive of the rented accommodation : OHARA 784 6 persons

Map of the mobil home  
Pitch N°60



Type of the accommodation : **OHARA 784 6 persons**

Age of the accommodation: 2 years

Surface of the accommodation (exclusive the terrace) : 32 m<sup>2</sup> terrace 12 m<sup>2</sup>

Maximum number of persons: 6

Accommodation not accessible for disabled persons.

### *Descriptive inside*

1<sup>st</sup> room :

2 beds for one person with mattress, mattress cover, pillow and blanket.

1 bedside table, a closet, a shelf.

2<sup>nd</sup> room :

2 beds for one person with mattress, mattress cover, pillow and blanket.

1 bedside table, a closet, a shelf.

3<sup>rd</sup> room :

1 bed for two persons with mattress, mattress cover, pillow and blanket.

1 bedside table with a bed light, a closet, a shelf.

Possibility to buy disposable sheets at the reception.

Living room : a sofa, a table, 3 chairs and a closet storage.

Kitchen : 1 Gas hob with 4 burners, 1 microwave oven, 1 fridge, 1 cooking utensils and crockery for 6 persons (see inventory), an electric coffee maker and a toaster. A garden table, a deckchair and 6 chairs complete the furniture.

The accessories and cleaning supplies are provided.

Sanitary facilities: a separate WC and a bathroom with shower and a wash basin.

Heating : an electric radiator in all the room except WC.

Internet : available at the reception.

Inventory:

The inventory must be controlled at your arrival and any anomaly must be reported at the reception.

<b>Inventaire MOBILHOME 60</b>			
français	anglais	néerlandais	
assiettes	plates	borden	10
assiettes creuses	soup plates	diepe borden	8
petites assiettes	small plates	kleine borden	10
saladier	salad bowl	schaal	2
plat creux	hollow dish	diep bord	1
plat inox	inox dish	inox bord	1
bols	bowls	kommen	8
tasses	cups	bekers	8
verres 25 cl	glasses 25cl	glazen 25 cl	8
cafetière électrique	electric coffeemaker	elektrisch koffiezetapparaat	1
verres 33cl	glasses 33cl	glazen 33 cl	8
coquetiers	egg cups	eierdopje	8
pichet	jug	karaf	1
casseroles	pans	pannen	4
poêle	stove	koekepan	2
fait tout et couvercle	fact all and lids	grote pan en deksels	1
passoire	strainer	zeef	1
plat à four	oven dish	ovenschaal	1
couvercle	cover	déksel	2
couteaux	knives	messen	10
cuillères	spoons	lepels	10
fourchettes	forks	vorken	10
petites cuillères	small spoons	lepeltjes	10
couverts à salade	covers with salade	sla bestek	1
rape	rape	verkrachting	1
cuillère bois	wooden spoon	houten lepel	1
plateau	shelf	shelf	1
théière	teapot	theepot	1
gobelet gradué	measuring cup	maatbeker	1
louche	big spoons	soeplepel	1
écumoire	skimmer	schuimspaan	1
spatule	spatula	spatel	1
bac glaçons	ice cubes	ijsklontjes	1
couteau à découper	carving knife	snijmes	1
grille pain	toaster	broodrooster	1
ouvre boîte	bin	blikopener	1
ouvre bouteille	open bottle	flesopener	1
couteau à pain	breadknife	broodmes	1
économe	potato peeler	aardappelschil mesje	1
essoreuse à salade	salad dryer	salade droger	1
planche à découper	cutting board	snijplank	1
dessous de plat	Coasters	onderzetter	1
seau	bucket	emmer	1
serpillère	mop	dweil	1
pelle	shovel	stoffer	1
balai	soft broom	bezem	1
balai brosse	hard broom	shrobber	1
poubelle	dustbin	vuilnisbak	1
cendrier	ashtray	asbak	1
couvertures	blankets	dekens	5
alèzes	mattress protectors	Matrasbeschermers	5
oreillers	pillows	hoofdkussens	6
cintres	clotheshangers	hangertjes	15
séchoir à linge	drier	droger	1
paillason	doormat	deurmat	1
décrottoir	mud-scraper	schraper	1
tapis de bain	carpet of bath	badmat	1
brosse WC	toilet brush	WC borstel	1
dérouleur papier WC	toilet paper roller	WC rolhouder	1
micro-ondes	microwave	magnetron	1
pincettes à linge	clothes pins	wasknijpers	1
bassine	tub	teil	1
Inventaire à contrôler à l'arrivée - Signaler toute anomalie à l'accueil Tout ustensile cassé ou détérioré devra être remplacé ou remboursé Draps jetables en vente à l'accueil			

#### **4. Prices and modalities of the accommodation**

Price of the accommodation:

one night during low season : 85 €

one night during high season (July/August) : 125 €

one week during low season: 450 €

one week during high season (July/August) : 650 €

These prices don't include our seasonal promotions, to profit of them, visit the "promotions" page on our website.

The amount of the local tax : 0,40 € per person of more than 13 years and per day (for information)

The amount of the advances : 50 % of the total amount (exclusive local tax)

Conditions of payment: at the starting of your stay, when handing over the keys.

Booking fee: free

Third-party liability insurance required.

It's forbidden to smoke in the rentals.

#### **5. Prices of the additional rent services and the other services**

Additional, not included in the rental price services:

- Cleaning : 50 € (if not done by you)
- Bedding : 5 to 7 € for disposable sheets
- Supplement for extra vehicle: 5 € per day

## 6. Rental conditions : to read attentively and to return signed to the campsite.

The hire becomes only effective after our agreement, subject to availability, and after the receipt of a payment of 50% deposit of the total amount of rent and of this present contract signed.

A mobilhome cannot be occupied by a number of persons more than that for which it was designed, pets are allowed (2 € per day).

The rental price includes the persons, one car, the electricity and gas. It does not include the sheets, bedding, visitors, extra cars, the cleaning and local tax.

If you have to give up your stay, the cancellation should be notified by post or mail to us, the date of receipt will be the date of cancellation. Cancellation fee : you will have to pay

- 50% if you cancel more than 30 days before your date of arrival
- 100% if you cancel less than 31 days before your date of arrival or if you don't come at this date.

The full amount of stay is payable on the arrival day. No reduction may be granted in the case of a late arrival or advanced departure.

A deposit of 200 Euros must be paid at the campsite reception as well as 50 Euros for cleaning the rental, if it needs to be cleaned by us. At your arrival and on the day of your departure, an inventory is made by the campsite manager with your presence during our opening hours. During your stay, the maintenance of the rental is depending on you and you must return it clean and tidy. The deposit will be returned at the end of your stay after deduction of missing items and damage.

All customers are required to comply with the rules of the campsite, posted up at the reception. All customers must have insurances for their property and their family.

Signature customer preceded by the mention "read and approved"

### Request for reservation for renting mobilhome OHARA pitch 60 :

NAME First name : \_\_\_\_\_

Address : \_\_\_\_\_

Phone : \_\_\_\_\_ Number of adults : \_\_\_\_\_ Number of children (-13 years) : \_\_\_\_\_

Date of arrival : \_\_\_\_\_ Date of departure : \_\_\_\_\_

Price of the stay \_\_\_\_\_ € local tax \_\_\_\_\_ €

Payment of an advance of 50% of the total price, that's to say \_\_\_\_\_ € by :

- cheque
- bank transfer (contact us)
- species \*

\* scratch as appropriate